

Montgomery Township School District



Public Hearing 2019-2020

Maintaining Excellence

April 30, 2019

Montgomery Township School District

Factors Included in the Process of Planning a Budget



- **Student Achievement**
- **Safety and Security**
- **Improving Transportation System**
- **Enrollment Projections**
- **Class Size**
- **Special Education**
- **Staffing, Contracts and Benefits**
- **Program Offerings**
- **Technology**
- **Professional Development**
- **Curriculum and Instruction**
- **Supplies**
- **Facilities and Maintenance**

Montgomery Township School District

Budget Process



The budget process is ever going with the board, administration and community

- **September 2018** - District staff began the formalization of the 2019-2020 budget
- **December/February** – Superintendent and administrators reviewed budget requests for reasonableness of needs
- **March 7, 2019** – State aid was released
- **March 12, 2019** - The Board of Education adopted a tentative budget

Montgomery Township School District

Budget Process



- **March 19, 2019** - District submitted the budget to the Executive County Superintendent for approval
- **April 18, 2019** – Reviewed budget for the public presentation with the Operations, Facilities and Finance Committee
- **April 22, 2019** - The Executive County Superintendent approved the 2019-2020 budget for advertising
- **April 25, 2019** – Advertised in the newspaper
- **April 30, 2019** - Public Hearing and Board of Education adoption of the 2019-2020 school budget

Montgomery Township School District Explanation of Funds



- **General Fund**
 - **Operating Budget – Today’s Focus**

- **Special Revenue Fund**
 - **Entitlements received later in year**

- **Debt Service Fund**
 - **Obligation at time of debt occurring**
 - **i.e. – Sale of bonds**

Montgomery Township School District Enrollment



Fiscal Year	Enrollment	Change in Enrollment	Percentage Change in Enrollment
2019/2020*	4637	-47	-1.01%
2018/2019	4684	-103	-2.20%
2017/2018	4787	-12	-0.25%
2016/2017	4799	36	0.75%
2015/2016	4763	26	0.55%
*2019/2020 are Estimated Projections			

Montgomery Township School District



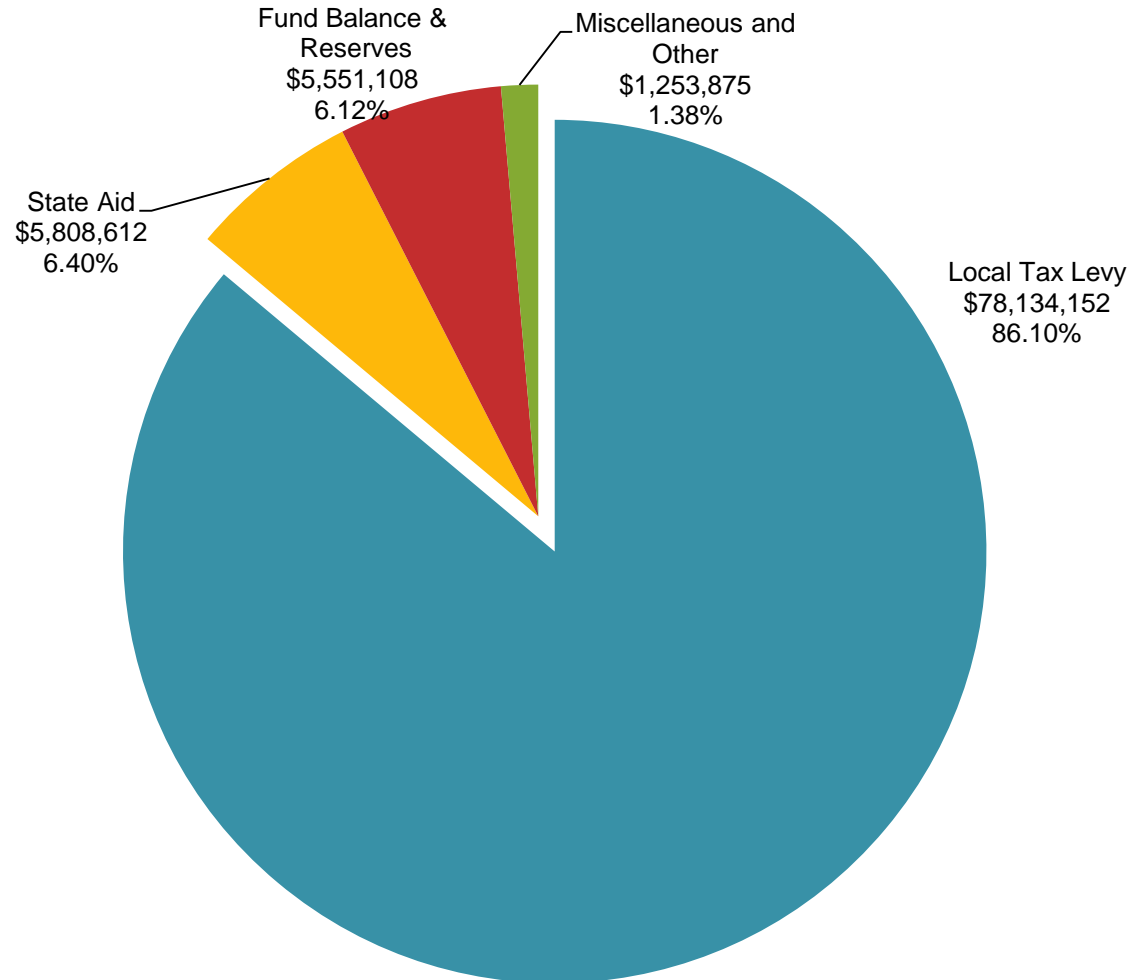
Where Does the Money Come From?



15

Montgomery Township School District

General Fund Sources



Montgomery Township School District Revenue & Sources

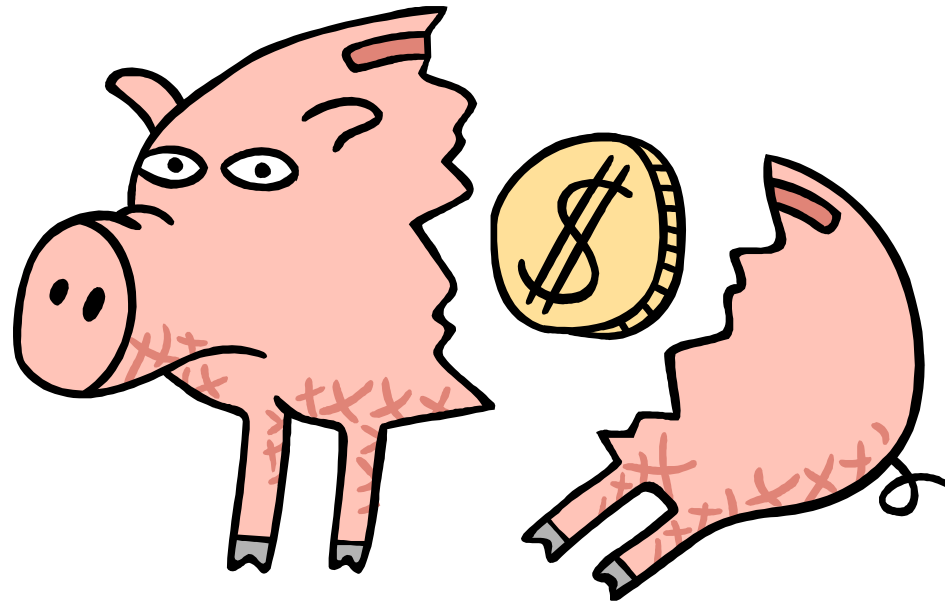


Tax levy			
	2018-2019 Tax levy	\$ 75,780,287	
	Tax levy of 2%	1,515,606	
	Health Care Adjustment	572,987	
	Use of Banked Cap	265,272	
	Total		\$ 78,134,152
State aid			
	2018 – 2019 budgeted	\$ 4,849,956	
	Increase to Extraordinary Aid Based on Projection	439,000	
	Increase in State Aid	419,656	
	Nonpublic Funding	100,000	
	Total		5,808,612
Other			
	2018 – 2019 Capital Reserve Withdraw	\$ 0	
	2018 – 2019 Miscellaneous	283,379	
	2018 – 2019 Budgeted Fund Balance	3,729,336	
	2018 – 2019 Unrestricted Miscellaneous	512,845	
	Increase to Unrestricted Miscellaneous	532,840	
	Increase to Capital Reserve Withdraw	1,085,000	
	Increase to Miscellaneous	(75,189)	
	Increase to Budgeted Fund Balance	736,772	
	Total		6,804,983
		2019 – 2020 Total Operating Budget	\$ 90,747,747
		2018 – 2019 Total Budgeted Operating Budget	\$ 85,155,803
		2019 – 2020 Increase in Sources	\$ 5,591,944

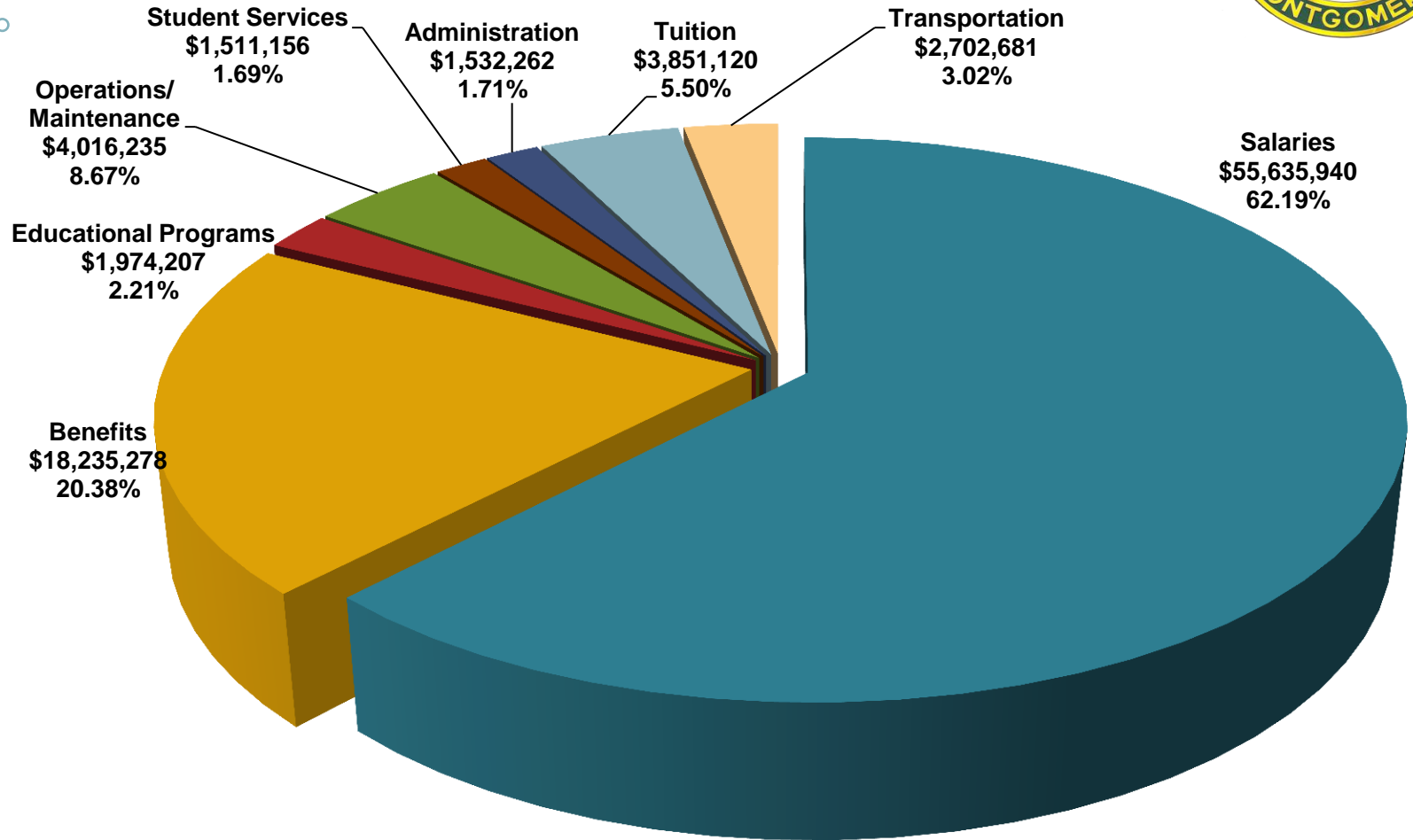
Montgomery Township School District



Where Does the Money Go?



Montgomery Township School District



Salaries = all staff salaries including administration

Montgomery Township School District Appropriations to Note



Increases to Appropriations		
Salaries		\$ 2,827,140
Health benefits		1,058,768
Tuition		941,319
Replace Shingled Roof OHES		800,000
Sand and Refinished Gym Floors LMS		30,000
Replace Auditorium Carpet UMS		155,000
Replace Interior Doors UMS		65,000
Replace Carpet Coral Room MHS		35,000
7 School Buses Leasing		145,370
Decreases to Appropriations		
Operations & Maintenance		(282,180)
Extracurricular Activity/Sports		(81,763)
Equipment for Districtwide Technology		(14,000)
Purchase Professional Services		(55,638)
Other Miscellaneous		(32,072)
		<u>\$ 5,591,944</u>
Total Operating Sources for 2019/2020		<u>\$ 5,591,944</u>

Montgomery Township School District Cost Per Pupil Calculation



<u>Category</u>	<u>Amount</u>	<u>Percentage</u>
Classroom Instruction	\$ 37,578,601	46%
Benefits	18,235,278	22%
Support Services	10,524,496	13%
Operations & Maintenance of Facilities	6,942,423	9%
Administration	6,121,066	8%
Extracurricular Activities	1,462,776	2%
Total	\$ 80,864,640	100%
Enrollment	4,637	
Cost Per Pupil	\$ 17,439	

The Department of Education does not include pensions paid by state, local contributions to special revenue, tuition expenditures, interest payments on lease purchase buildings, transportation costs, residential costs, judgments against the district, equipment purchases, facility acquisitions and construction, debt service and restricted funds in the per-pupil calculation.

Montgomery Township School District



Estimated Tax Impact

	Montgomery Township 2019-2020		Rocky Hill Borough 2019-2020
2019 Net Valuation Taxable	\$ 3,885,578,917	A	\$ 131,393,869
2019-2020 School Taxes - General	\$ 76,156,511	B	\$ 1,977,641
2019 Tax Rate on Average Home	\$ 0.01960	B/A=C	\$ 0.01505
2019 Average House Assessment	\$ 500,806	D	\$ 447,200
2019 Total School Taxes on Average Home	\$ 9,816	D/C=E	\$ 6,731
2018 Total School Taxes on Average Home	\$ 9,756	F	\$ 6,488
2019 Estimated Monthly Increase	\$ 5.00	E-F/12	\$ 20.25

Net valuations and average house assessments furnished by localities.

Student Enrollment October 15, 2018	Montgomery 4,568.50	Rocky Hill 111.50
--	--------------------------------	------------------------------

Montgomery Township School District

5-Year Financial Timeline: A Look Ahead



Board and District Responsiveness to Community Interest

Future Considerations:

- Full-Day Kindergarten - \$1 Million to \$2 Million (staffing and facilities)
- Later School Start Times - \$1.5 million to \$2.5 Million (transportation, etc.)

Additional Plans:

- Increase Maintenance Reserve
- Reduce Parking Fee

Montgomery Township School District



Thank You